

Where is it in Minnesota?



ST. P. & N. P. Ry.
PASSENGER STATION
— FIRST CLASS —

* Front Elevation *

1





ST. P...
PASSENGER
- FIRST

3



ST. P & N.
PASSENGER
— FIRST CL





ST. P & N. P. Ry.
PASSENGER STATION
— FIRST CLASS —

* Front Elevation *







ST. P
PASSENG
- FIRE



ST. P & N
PASSENGER
— FIRST CLASS —



10



57
PASSENGER STATION
— FIRST CLASS —

Minnesota Treasure Hunt

Response Verification



1. Landmark Center – St. Paul
2. Plummer Building, Mayo Clinic - Rochester
3. Minnehaha Falls - Minneapolis
4. Jordan Brewery Ruins- Jordan
5. Aerial Bridge - Duluth
6. St. John's University Church
Collegeville
7. Grand Marais Lighthouse – Grand Marais
8. Soudan Underground Mine – Tower
9. Round Tower– Ft. Snelling
10. Keepers of the Sacred Tradition of Pipemakers Gift Shop - Pipestone

ST. P & N. P. Ry.
PASSENGER STATION
— FIRST CLASS —

* Frost Elevation *



Shadows of Time...

Minnesota's Surviving Railroad Depots

ST. P. & N. P. Ry.
PASSENGER STATION
— FIRST CLASS —

* Front Elevation *



**Philco 90 Superheterodyne
Tube Radio Cathedral 1931**

** Front Elevation **

ST. P & N. P. Ry.
PASSENGER STATION
- FIRST CLASS -

SARATOGA 37 N. CENTRAL
NEAR STORING KING
HUDSON RIVER N.Y.



ST. P. & N. P. Ry.
PASSENGER STATION
— FIRST CLASS —

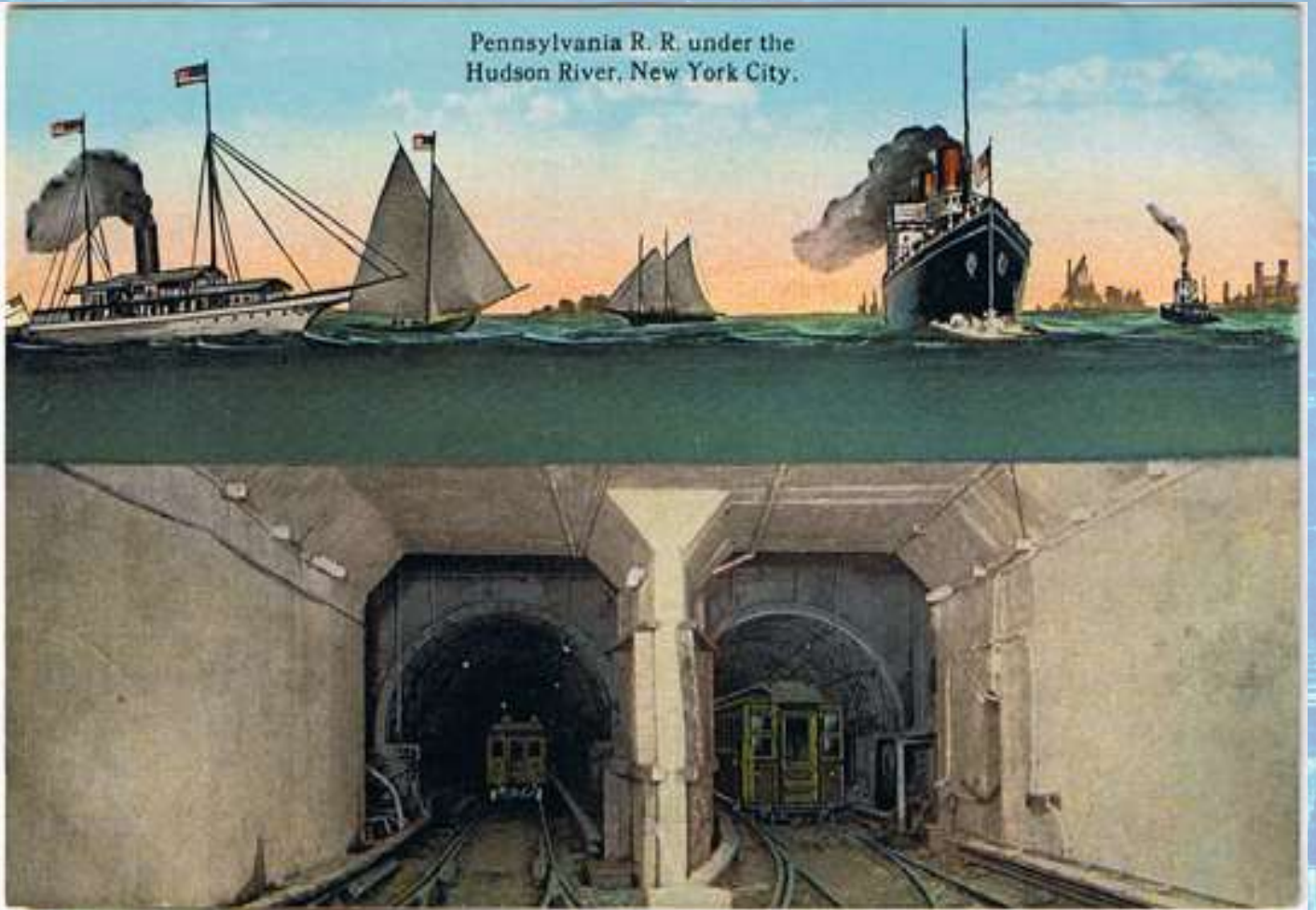
* Front Elevation *



ST. P. & N. P. Ry.
PASSENGER STATION
— FIRST CLASS —

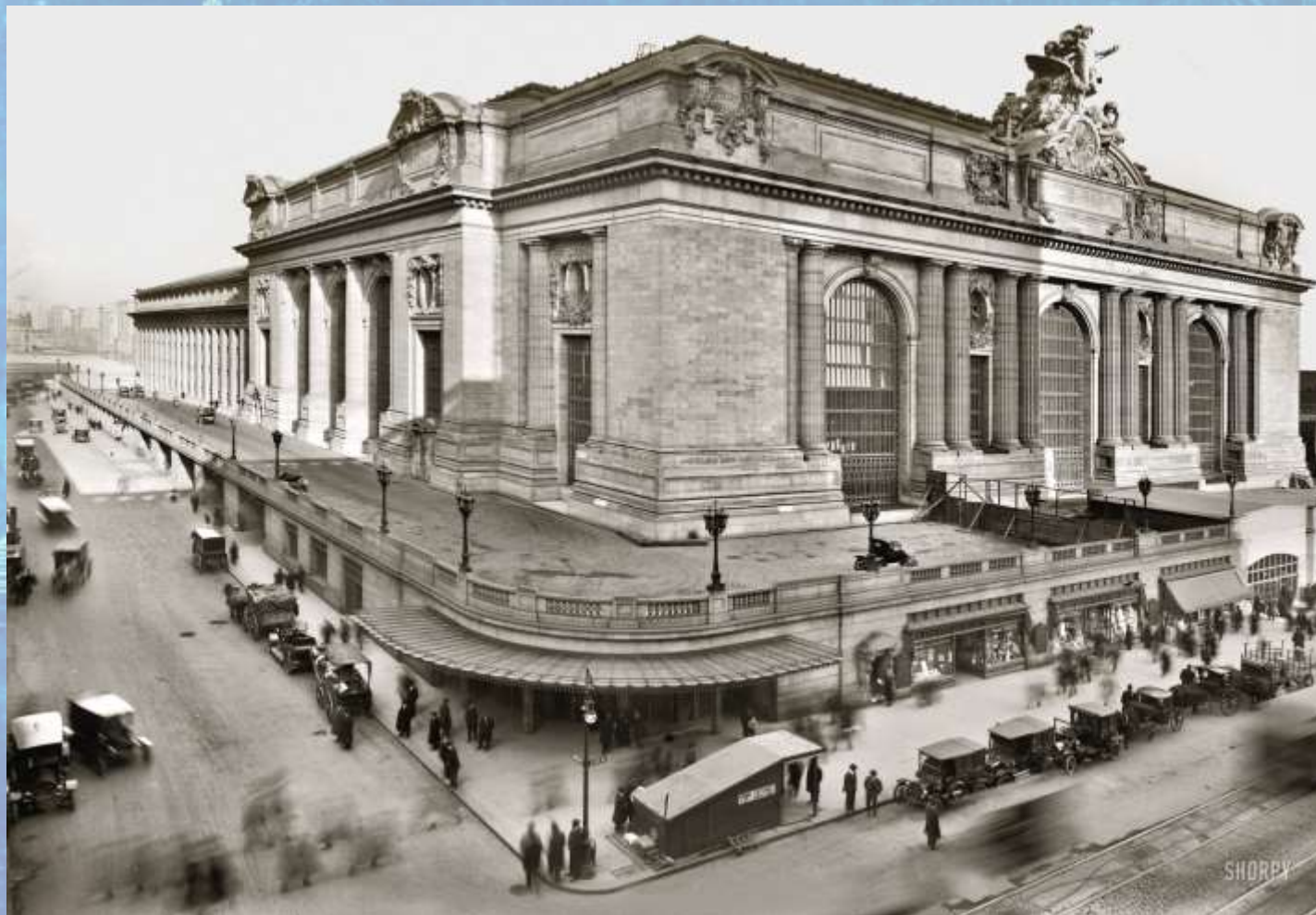
* Front Elevation *

Pennsylvania R. R. under the
Hudson River, New York City.



ST. P. & N. P. Ry.
PASSENGER STATION
— FIRST CLASS —

* Front Elevation *



ST. P. & N. P. Ry.
PASSENGER STATION
— FIRST CLASS —

* Front Elevation *

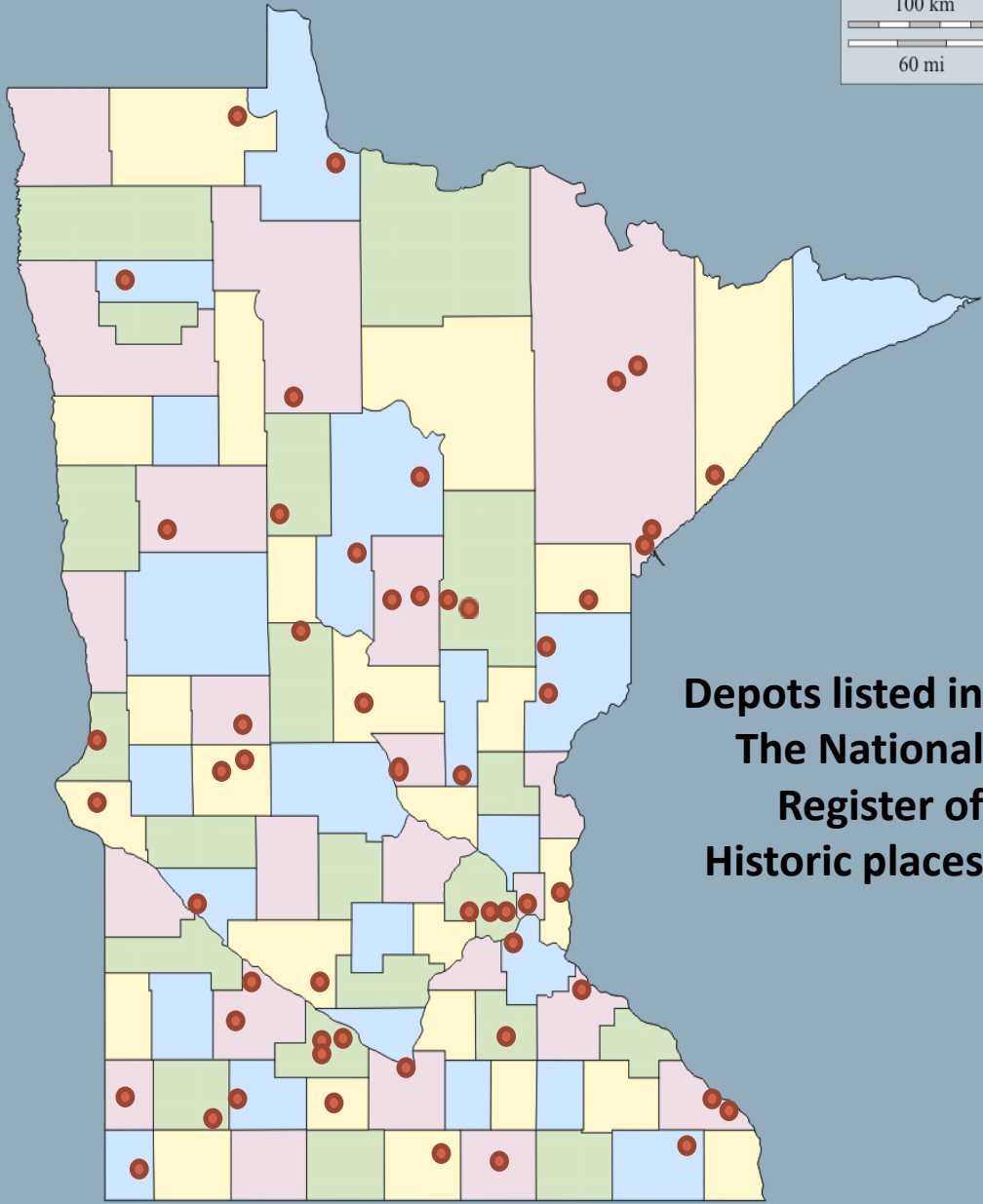


ST. P. & N. P. Ry.
PASSENGER STATION
— FIRST CLASS —

* Front Elevation *



© d-maps.com



**Depots listed in
The National
Register of
Historic places**

ST. P & N.
PASSENGER
— FIRST CLASS —



THIS PROPERTY
HAS BEEN PLACED ON THE
NATIONAL REGISTER
OF HISTORIC PLACES
BY THE UNITED STATES
DEPARTMENT OF THE INTERIOR

ST. P. & N. P. Ry.
PASSENGER STATION
— FIRST CLASS —

* Front Elevation *



Endion Depot Built 1899

ST. P. & N. P. Ry.
PASSENGER STATION
— FIRST CLASS —

* Front Elevation *

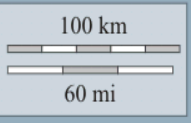


Moving Time Endion Depot

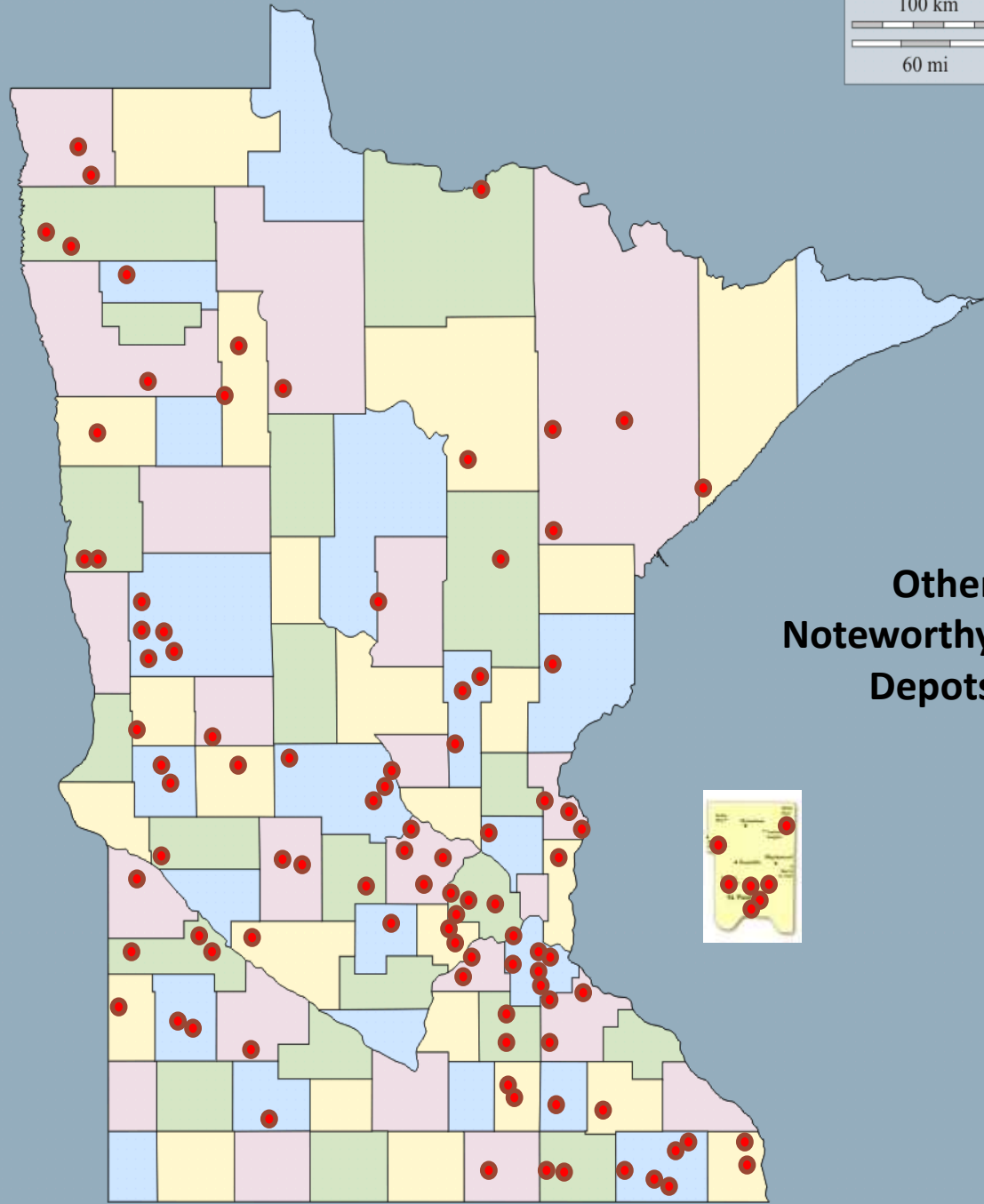


ST. P & N. P. Ry.
PASSENGER STATION
— FIRST CLASS —

* Front Elevation *



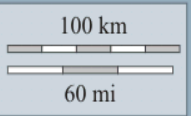
© d-maps.com



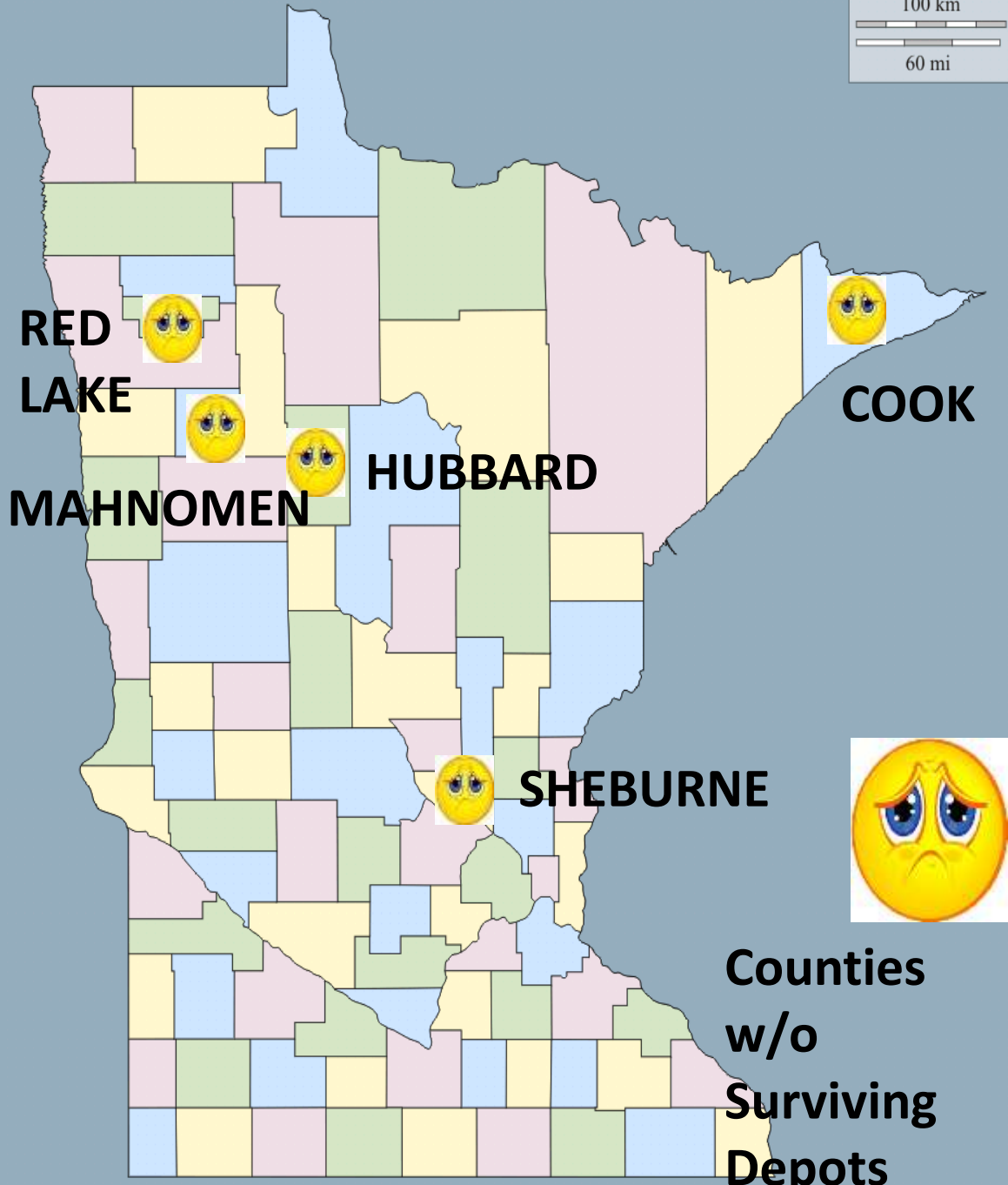
**Other
Noteworthy
Depots**



ST. P
PASSEN
- FIA



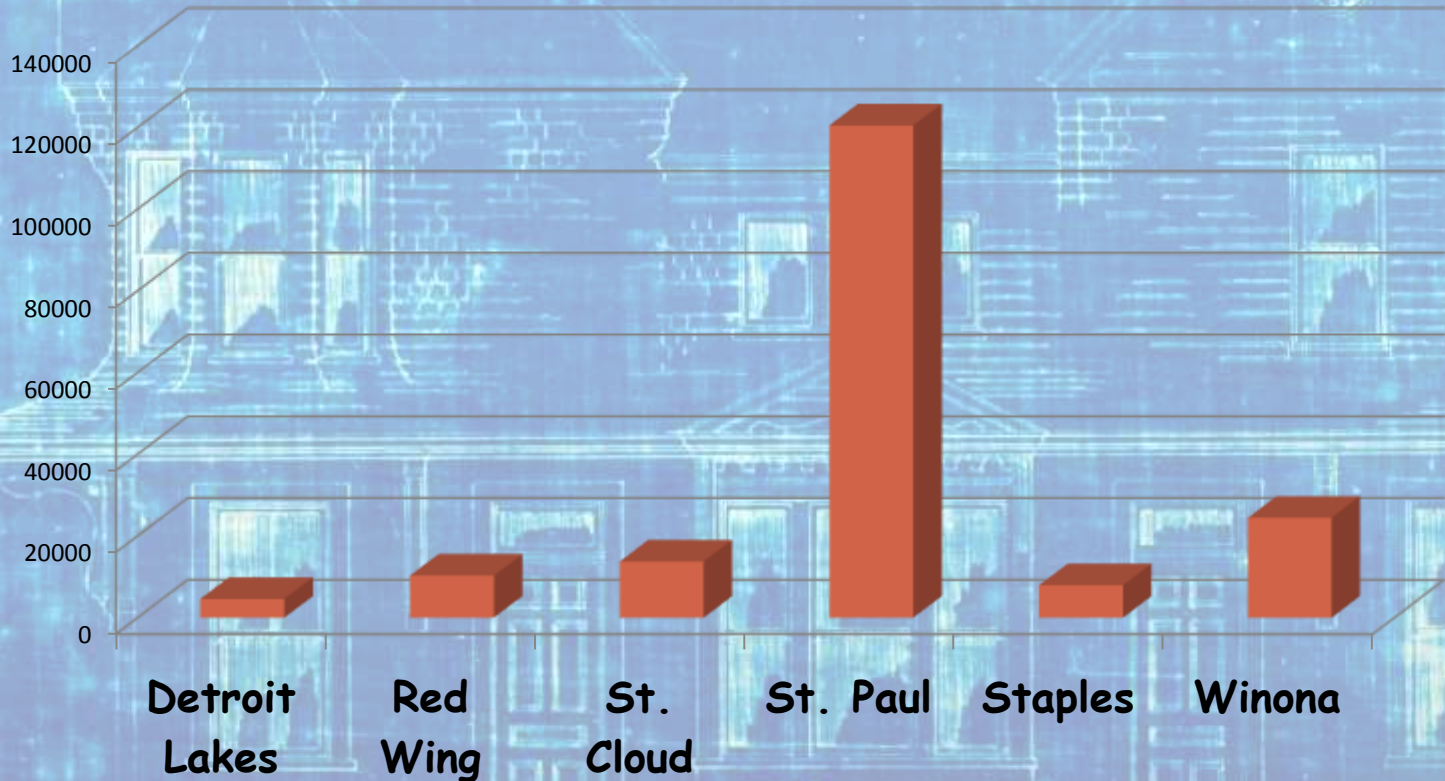
© d-maps.com



**Counties
w/o
Surviving
Depots**

ST. P
PASSEN
- FIA

AMTRAK Boardings and Alightings 2012



Cities with AMTRAK Service

ST. P. & N. P. Ry.
PASSENGER STATION
— FIRST CLASS —

* Front Elevation *

Symmetrical Plan

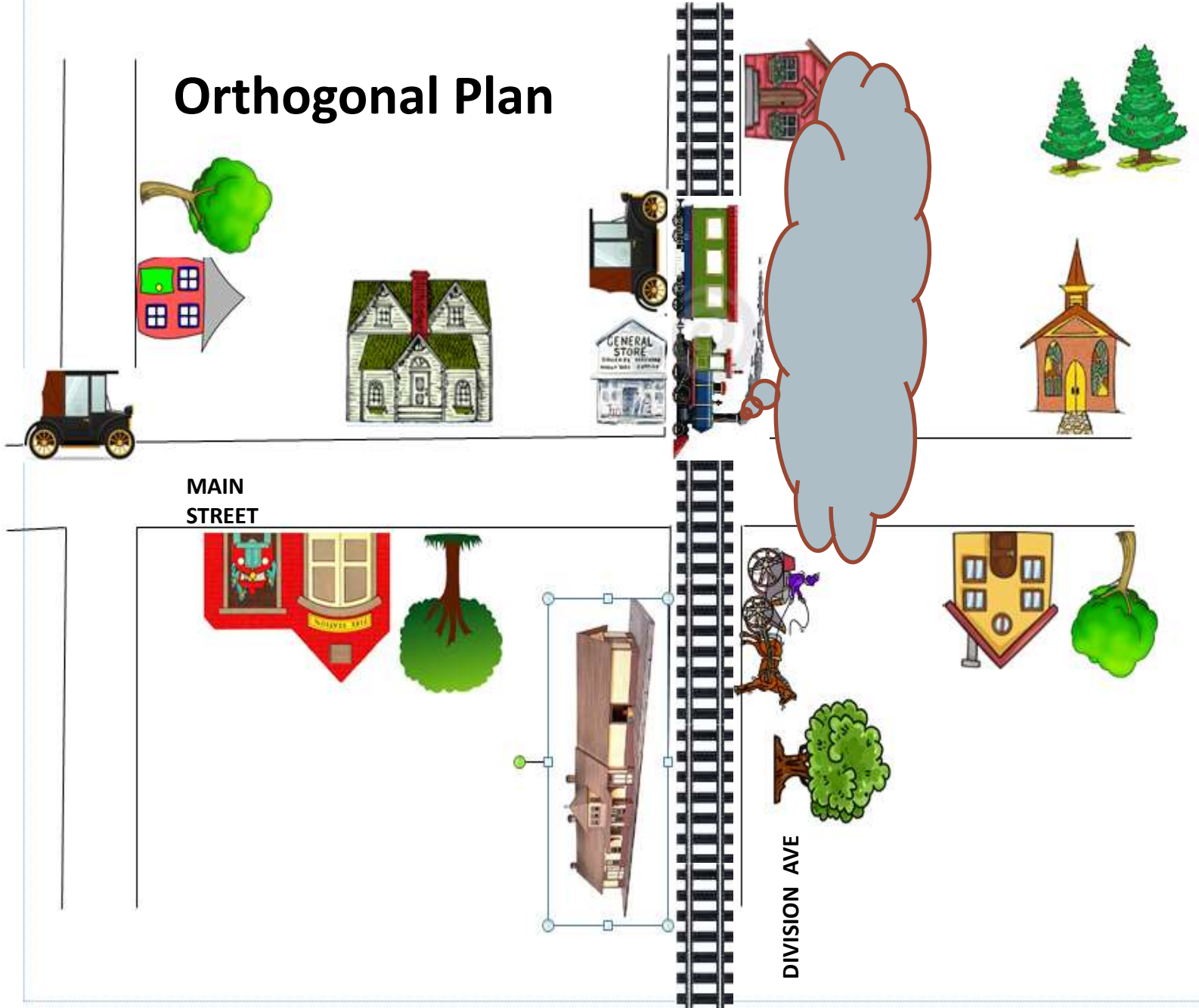


MAIN STREET



DIVISION AVE

Orthogonal Plan



MAIN STREET

DIVISION AVE

T-Town Plan

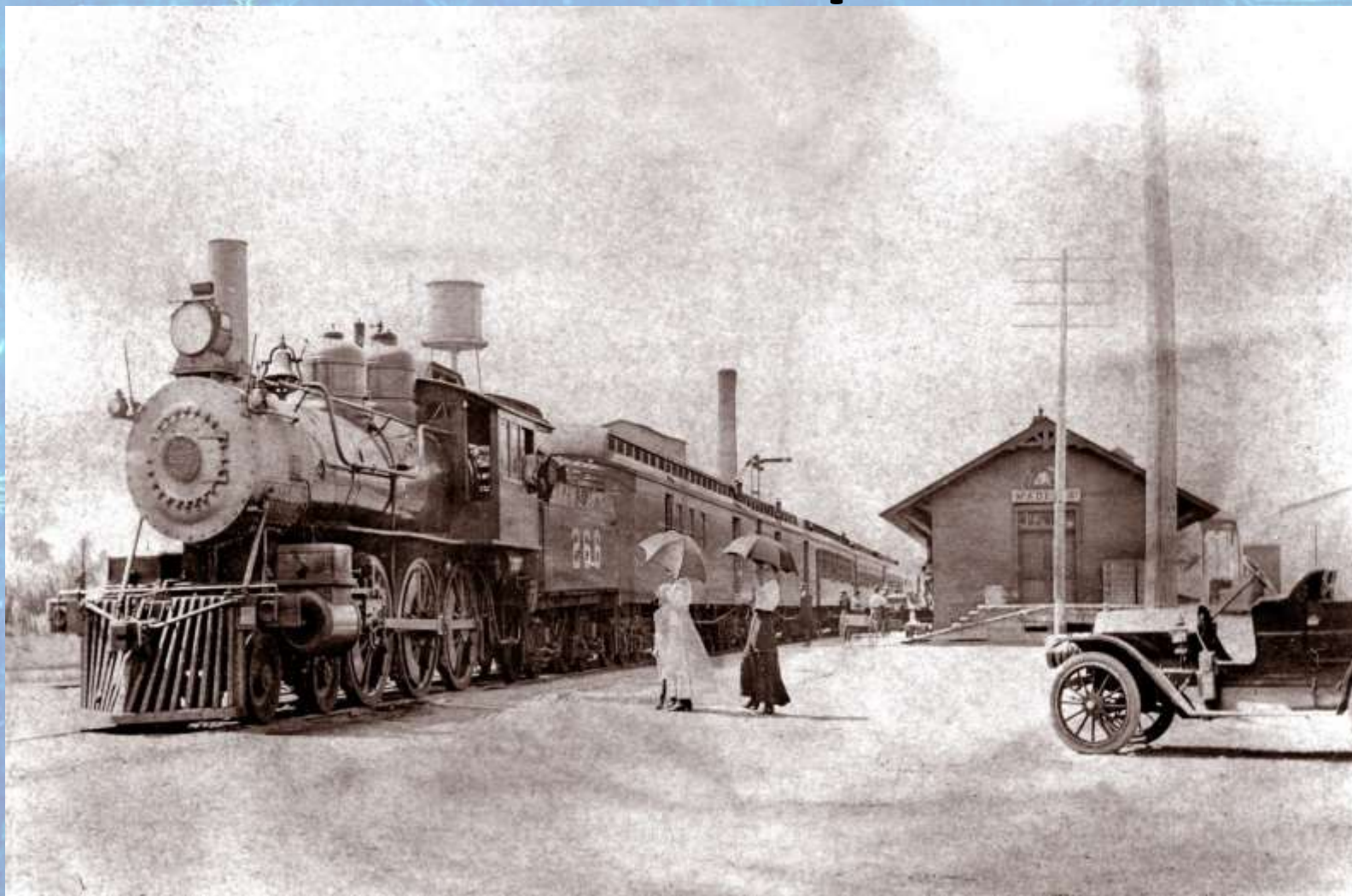


MAIN STREET



DIVISION AVE

Madelia Depot



ST. P. & N. P. Ry.
PASSENGER STATION
— FIRST CLASS —

* Front Elevation *



**Good Boy
(Little Orphan
at the Train)
Norman
Rockwell**



ST. P & N. P. Ry.
PASSENGER STATION
— FIRST CLASS —

* Front Elevation *

Steele County Historical Society

BIXBY RAILROAD DEPOT

The Bixby Railroad Depot dates back to 1866. Railroad service was inaugurated into the Owatonna area. It was given to the Steele County Historical Society by the Chicago, Milwaukee, St. Paul & Pacific Railroad and moved to its present site in 1964.

The last passenger train was on the line on June 30, 1952. Similar depots once dotted the area about every six or seven miles, that being the distance which could conveniently be traveled in the "horse and buggy" days for passenger and freight service. Furnishings and equipment were supplied by the railroads serving this area.

Plaque Courtesy Women's Club of Owatonna



(1866?) circa 1895
epot in Minnesota



P. Ry.

PASSENGER STATION

— FIRST CLASS —

* Front Elevation *



Rushford Depot, oldest two-story railroad station

Southern Minnesota Railway

Built 1867

ST. P. & N. P. Ry.
PASSENGER STATION
- FIRST CLASS -

** Growth & Education **



Minnesota's "Newest Depot" St. Paul AMTRAK Depot Built 1971

ST. P. & N. P. Ry.
PASSENGER STATION
— FIRST CLASS —

* Front Elevation *



ST. P & N.P. Ry.
PASSENGER STATION
— FIRST CLASS —



St. Paul AMTRAK Depot

** Front Elevation **



**Orchard Gardens (Burnsville)
Minnesota's Smallest Depot**

ST. P. & N. P. Ry.
PASSENGER STATION
- FIRST CLASS -



Orchard Garden Waiting Room

ST. P. & N. P. Ry.
PASSENGER STATION
— FIRST CLASS —

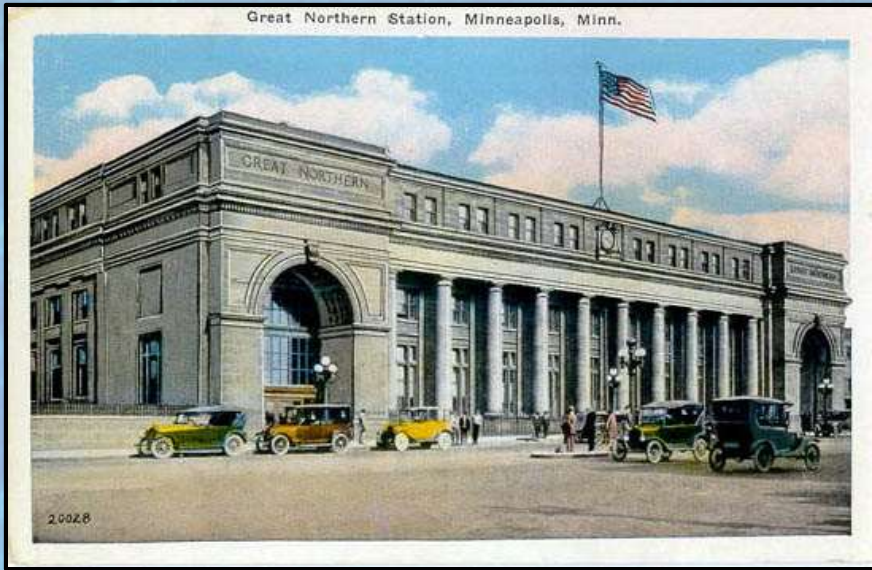
* Front Elevation *



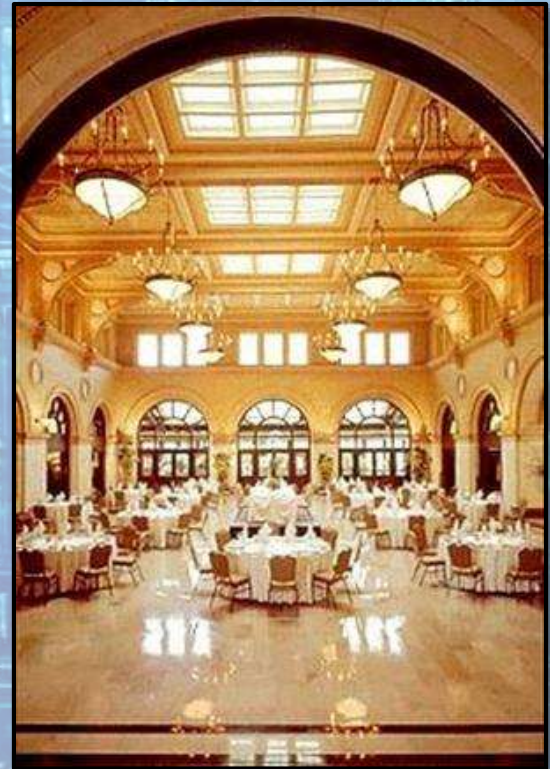
St. Paul Union Depot
Minnesota's Biggest Surviving Depot

ST. P & N.
PASSENGER STATION
— FIRST CLASS —

* Front Elevation *



Minneapolis Great Northern Depot Built 1913



ST. P. & N. P. Ry.
PASSENGER STATION
— FIRST CLASS —

* Front Elevation *



Minneapolis Great Northern Depot Demolished 1978



ST. P & N. P. Ry.
PASSENGER STATION
— FIRST CLASS —



Under Construction c. 1921



Just After Opening 1924



Passengers 1933



Main Concourse 1948

ST. P & N. P. N.
PASSENGER STATION
— FIRST CLASS —

* Front Elevation *



Brotherhood of Sleeping Car Porters

Notable Red Caps

- Benjamin Mays
- Gordon Parks



Pullman Porter Assisting
Passenger

ST. P & N. P. Ry.
PASSENGER STATION
— FIRST CLASS —

* Front Elevation *



ST. P & N. P. Ry.
PASSENGER STATION
— FIRST CLASS —

Redcap assisting passenger 1949

* Great Gradation *



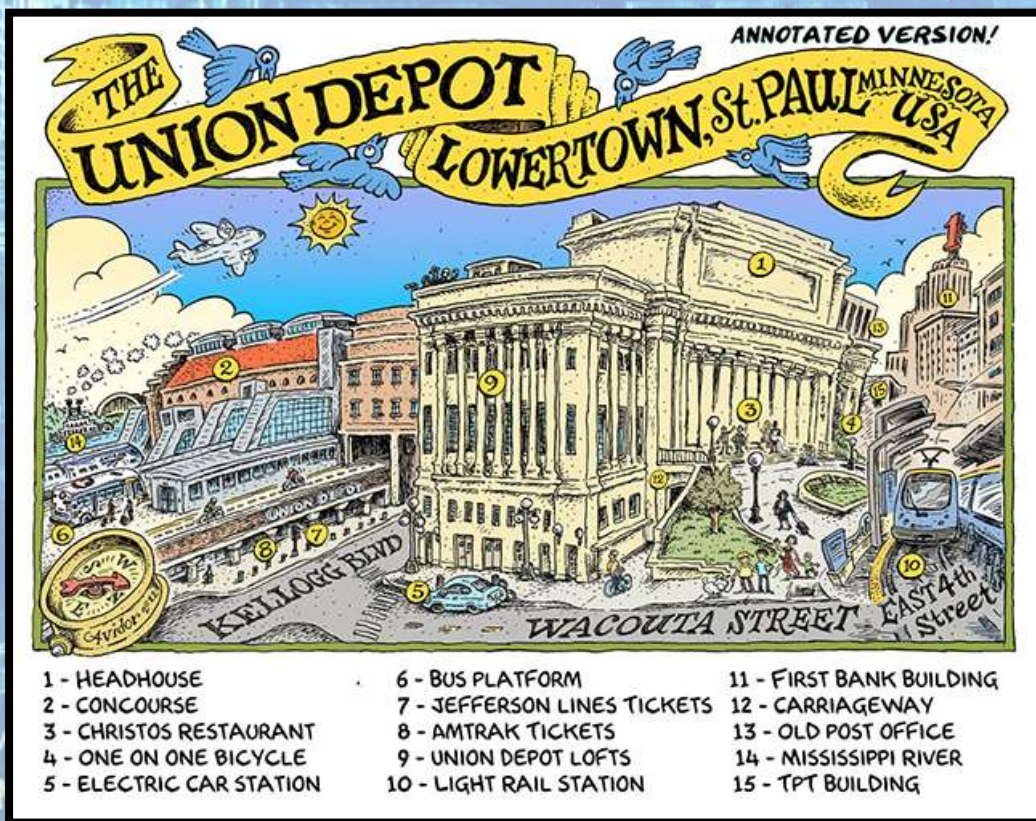
Sabira Aleathia Kifano, 63, poses with a cutout of her late father, A.B. Parker

ST. P & N. P. Ry.
PASSENGER STATION
— FIRST CLASS —

* Front Elevation *



A dynamic, expanding multimodal transportation hub once again serving the city and region.



ST. PAUL
 PASSENGER
 - FIRST CLASS -

Everything from Fine Dining at Christo's



To getting
“Hitched”



ST. PAUL
PASSENGER STATION
— FIRST CLASS —



ST. P. & N. P. Ry.
PASSENGER STATION
— FIRST CLASS —

Montevideo Depot Built 1901
* Front Elevation *



Montevideo Depot 1924



ST. P. & N. P. Ry.
PASSENGER STATION
- FIRST CLASS -

** Front Elevation **



2005



Scenes from SWEET land (A LOVE STORY) 2006

ST. P & N. P. Ry.
PASSENGER STATION
— FIRST CLASS —

* Front Elevation *



AUDUBON

Scenes from SWEET Land

ST. P. & N. P. Ry.
PASSENGER STATION
— FIRST CLASS —

(A LOVE STORY) 2006



North Redwood M&SL Depot (Date Unknown)

Courtesy of Redwood County Historical Society

ST. P. & N. P. Ry.
PASSENGER STATION
— FIRST CLASS —

* Front Elevation *

North Redwood Falls Depot

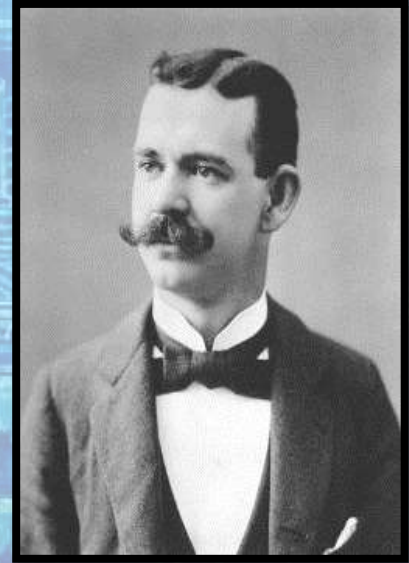
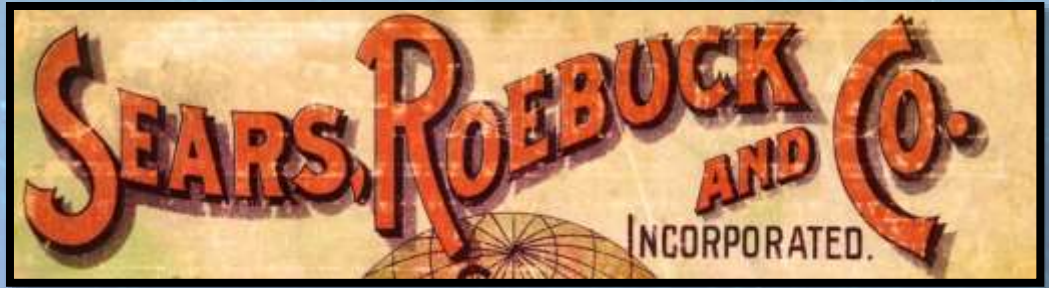


ST. P. & N. P. Ry.
PASSENGER STATION
— FIRST CLASS —

* Front Elevation *



Richard Warren
Sears
1863 - 1914



Alvah Curtis
Roebuck
1864 - 1948

ST. P. & N. P. Ry.
PASSENGER STATION
— FIRST CLASS —

* Front Elevation *



Wayzata Depot Built 1906

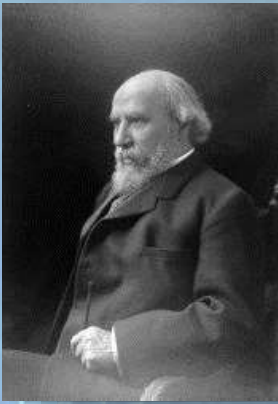
* Front Elevation *

ST. P. & N. P. Ry.
PASSENGER STATION
— FIRST CLASS —



ST. P. & N. P. Ry.
PASSENGER STATION
— FIRST CLASS —

* Front Gladation *

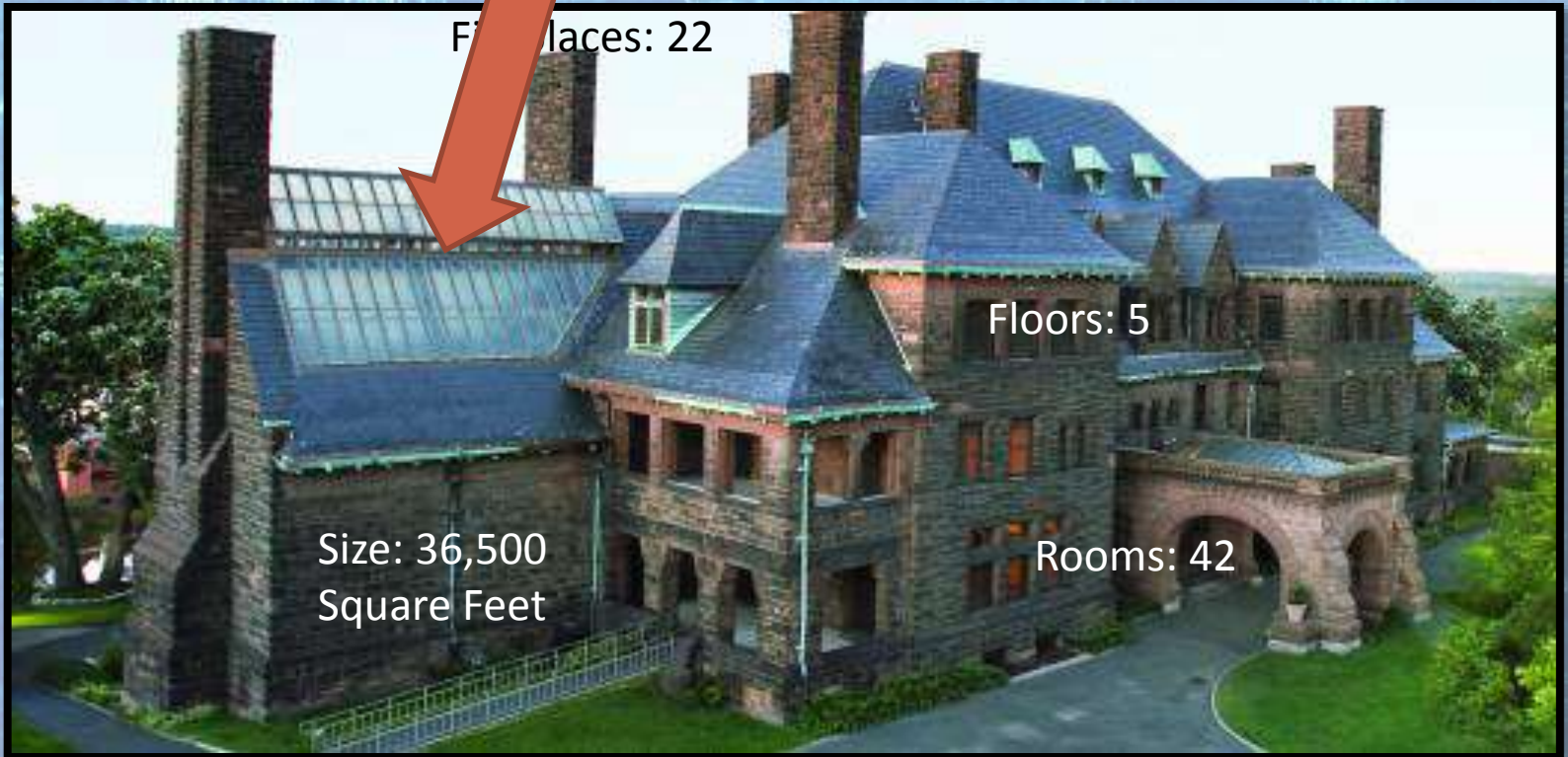


James J. Hill

September 16, 1838 – May 29, 1926

Skylit, 200-foot-long
art gallery

- Cut-Glass Chandeliers: 16
- Cost of Building in 1891: \$931,275.01
- Built Today more than \$20 Million



Floors: 22

Floors: 5

Size: 36,500
Square Feet

Rooms: 42

ST. P. & N. P. Ry.
PASSENGER STA.
— FIRST CLASS —

Minnesota's Downton Abbey



ST. P. & N. P. Ry.
PASSENGER STATION
— FIRST CLASS —

Kensington Depot Built 1886

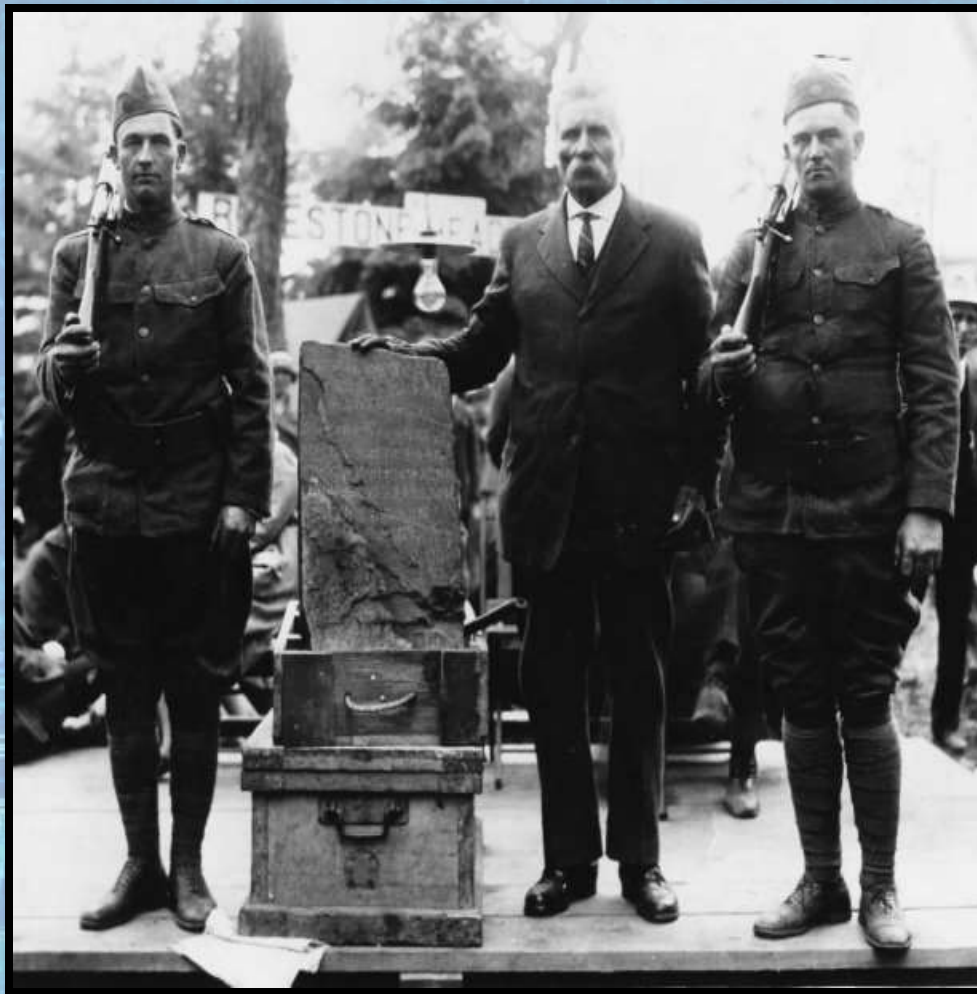
** front elevation **

Kensington Depot January 1927



ST. P. & N. O. R.
PASSENGER STATION
— FIRST CLASS —

Kensington Runestone



**Olaf Ohman places his hand on
the Kensington Runestone**

ST. P. & N. P. Ry.
PASSENGER STATION
— FIRST CLASS —

* Front Elevation *



**Amanda (standing) and her sister,
Ida**

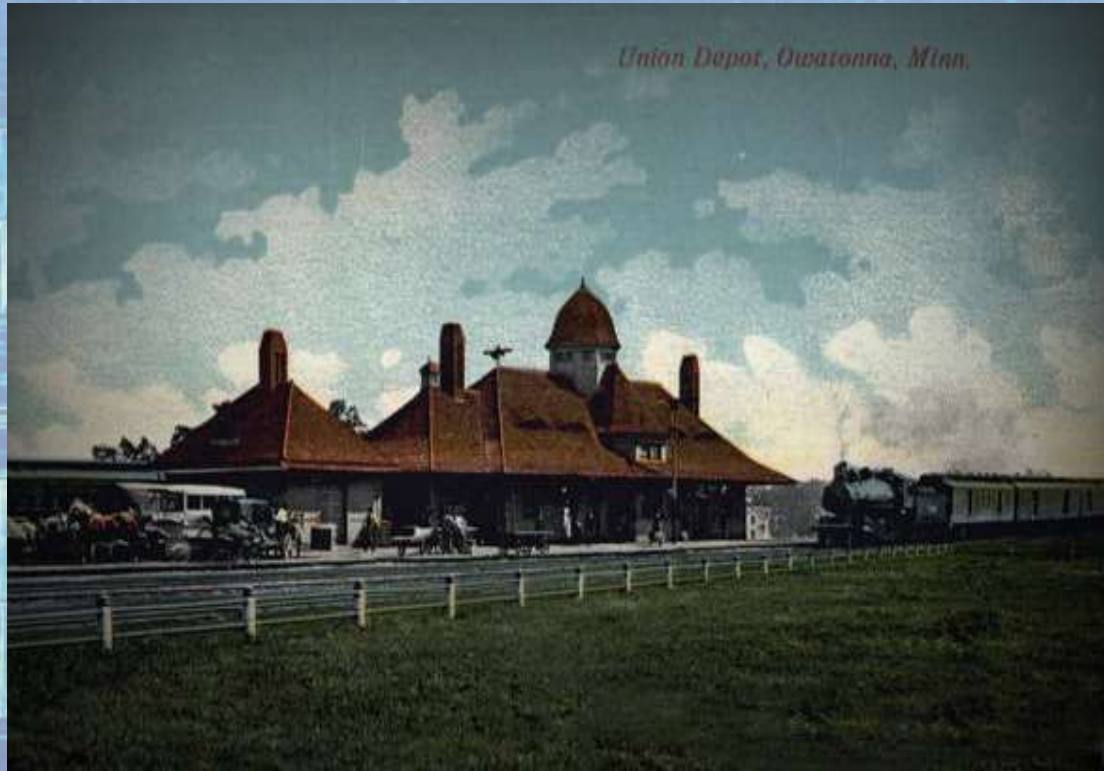
ST. P. & N. P. Ry.
PASSENGER STATION
— FIRST CLASS —

** Front Elevation **



ST. P. & N. P. R.
PASSENGER STATION
— FIRST CLASS —

Owatonna Union Depot Built 1887



Owatonna Union Depot Built 1887

ST. P. & N. P. Ry.
PASSENGER STATION
— FIRST CLASS —

* Front Elevation *



Owatonna Replica Depot

ST. P & N. P. Ry.
PASSENGER STATION
— FIRST CLASS —

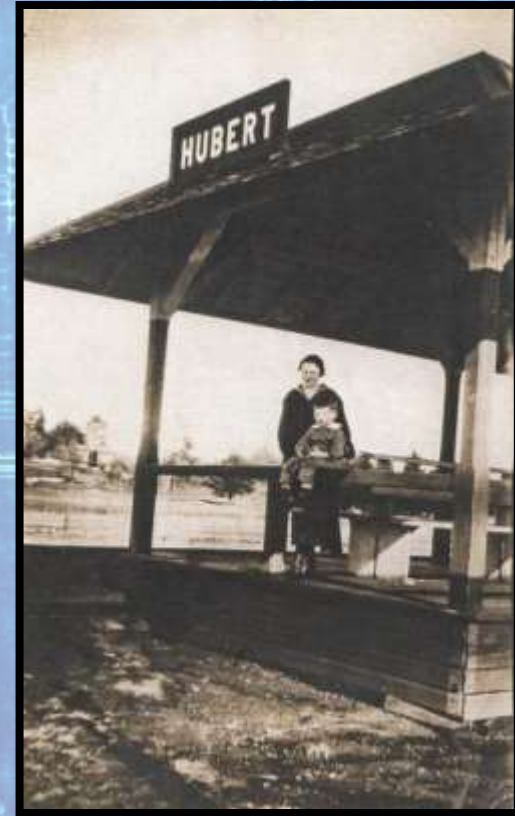
* Front Elevation *



ST. P. & N. P. Ry.
PASSENGER STATION
— FIRST CLASS —

Lake Hubert Depot Built 1896

* Front Elevation *



Builder: Minnesota and International Railroad
Subsidiary of the Northern Pacific

ST. P. & N. P. Ry.
PASSENGER STATION
- FIRST CLASS -



ST. P & N. P. Ry.
PASSENGER STATION
— FIRST CLASS —

Crosby Depot Built 1910

* Front Elevation *



ST. P & N. P. Ry.
PASSENGER STATION
— FIRST CLASS —

* Front Elevation *



Ripley's
**Believe It
or Not!**[®]

* Front Elevation *

ST. P. & N. P. Ry.
PASSENGER STATION
— FIRST CLASS —

“The only train station in the world that did not have trains pass by it”



ST. P. & N. P. Ry.
PASSENGER STATION
— FIRST CLASS —

* Front Elevation *



ST. P. & N. P. Ry.
PASSENGER STATION
— FIRST CLASS —

Baudette Depot Built 1923



A.J.
Dickerson
1st Agent



ST. P. & N. P. Ry.
PASSENGER STATION
— FIRST CLASS —

Baudette Depot Build 1923



Little Falls Depot Built 1900

ST. P. & N. P. Ry.
PASSENGER STATION
- FIRST CLASS -

** Front Elevation **

Born November 24, 1859

Died May 17, 1934

Buildings (among many others)

- Minnesota State Capitol
- Woolworth Building
Manhattan
- U.S. Supreme Court
- St. Louis Public Library



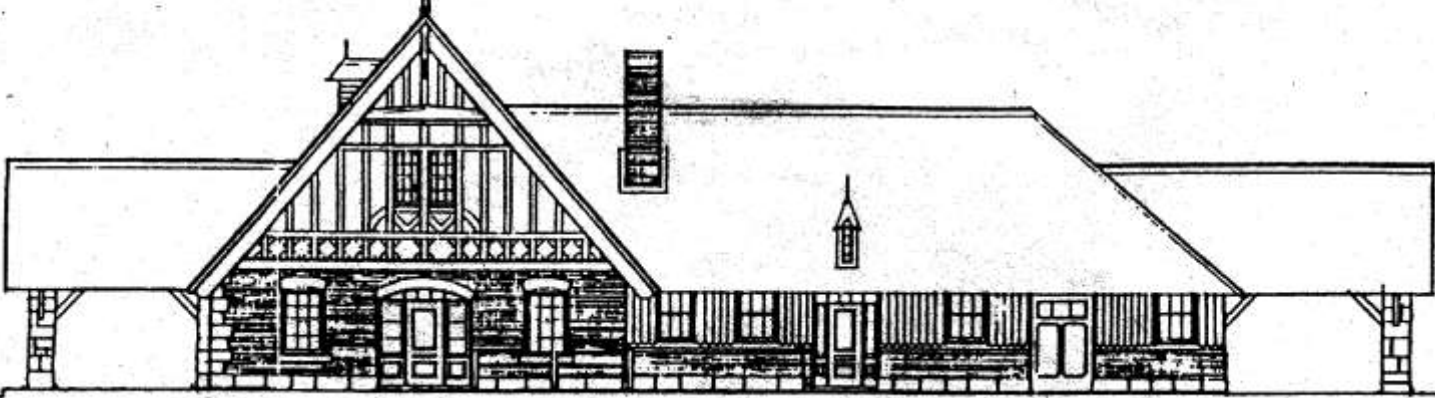
**Little Falls, Morrison County
Northern Pacific Railway Depot
Built: 1900**

ST. P. & N. P. Ry.
PASSENGER STATION
— FIRST CLASS —

* Front Elevation *



The Cass Gilbert Depot Society





Hinckley Depot Built 1894

ST. P. & N. P. Ry.
PASSENGER STATION
- FIRST CLASS -

** Front Elevation **



ST. P. & N. P. Ry.
PASSENGER STATION
— FIRST CLASS —

* Front Elevation *



"The Suicide Express," From the Ashes, 1915.

ST. P. & N. P. Ry.
PASSENGER STATION
— FIRST CLASS —

* Front Elevation *

HEROS



Thomas Dunn
Depot Agent

**“I think I’ve
stayed too
long”**

74. Dunn, Thomas—Age 25;
residence, Hinckley; son of Michael
Dunn, of Hinckley: was recognized
by appearance and jewelry; was
buried at Pine City.



ST. P. & N. P. Ry.
PASSENGER STATION
— FIRST CLASS —

* Front Elevation *



**Fire Monument
and mass grave of
248 people**



ST. P. & N. P. Ry.
PASSENGER STATION
— FIRST CLASS —



Sergt. BOSTON CORBETT, 10th N. Y. Cav.,
Who shot J. WILKES BOOTH, April 26, 1865.

Engraved according to an official report, by W. J. Southwick & Co., in the year 1865,
in the Clerk's Office of the Executive Court, for the History of Vermont.

W. J. Southwick

W. J. Southwick

**Sgt. Thomas "Boston"
Corbett**

1832 - 1894

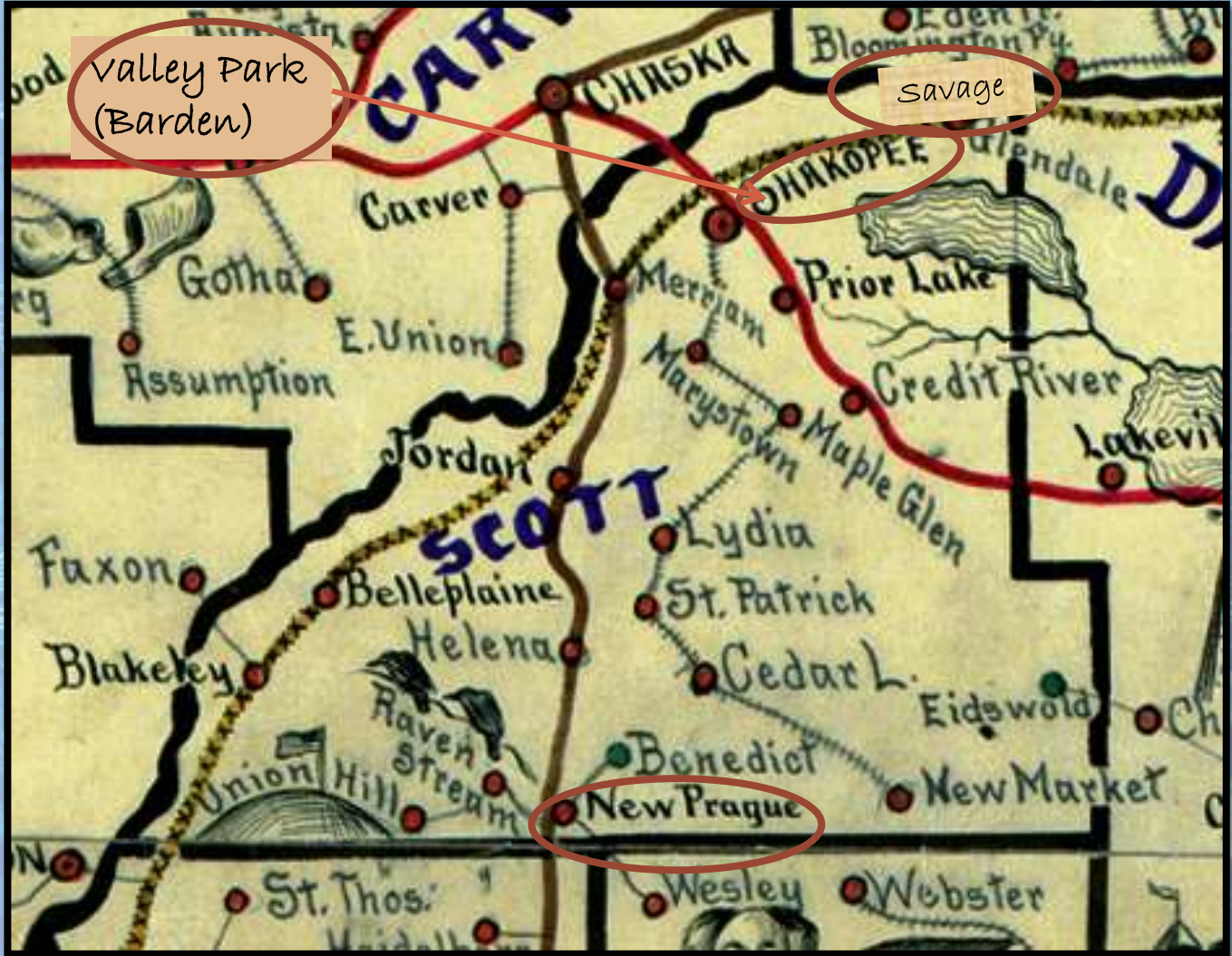
ST. P. & N. P. Ry.
PASSENGER STATION
— FIRST CLASS —

* Front Elevation *

WANTED
JOHN WILKES BOOTH
for the assassination of
ABRAHAM LINCOLN



\$ 100,000 Reward!



valley Park
(Barden)

Savage

New Prague

ST. P. & M. R. R.
PASSENGER STATION
— FIRST CLASS —
Galbraith's 1887 Minnesota Railway Service Map



**New Prague, Lesueur/Scott County
Minneapolis and St. Louis Railroad Railway Depot**

Built: 1877

ST. P. & N. P. Ry.
PASSENGER STATION
— FIRST CLASS —

** Front Elevation **



Savage Depot, Scott County

ST. P. & N. P. CO.
PASSENGER STATION
— FIRST CLASS —

* Front Elevation *

Built: 1880



Savage Depot, Scott County

ST. P & N. R. Co.
St. Paul, Milwaukee and Omaha Depot
PASSENGER STATION
** Front Elevation **
Built: 1880
- FIRST CLASS -



Shakopee, Scott County

Omaha and Milwaukee Road shared depot

Built: 1909

ST. P. & N. P. Ry.
PASSENGER STATION
- FIRST CLASS -

*Elevation **

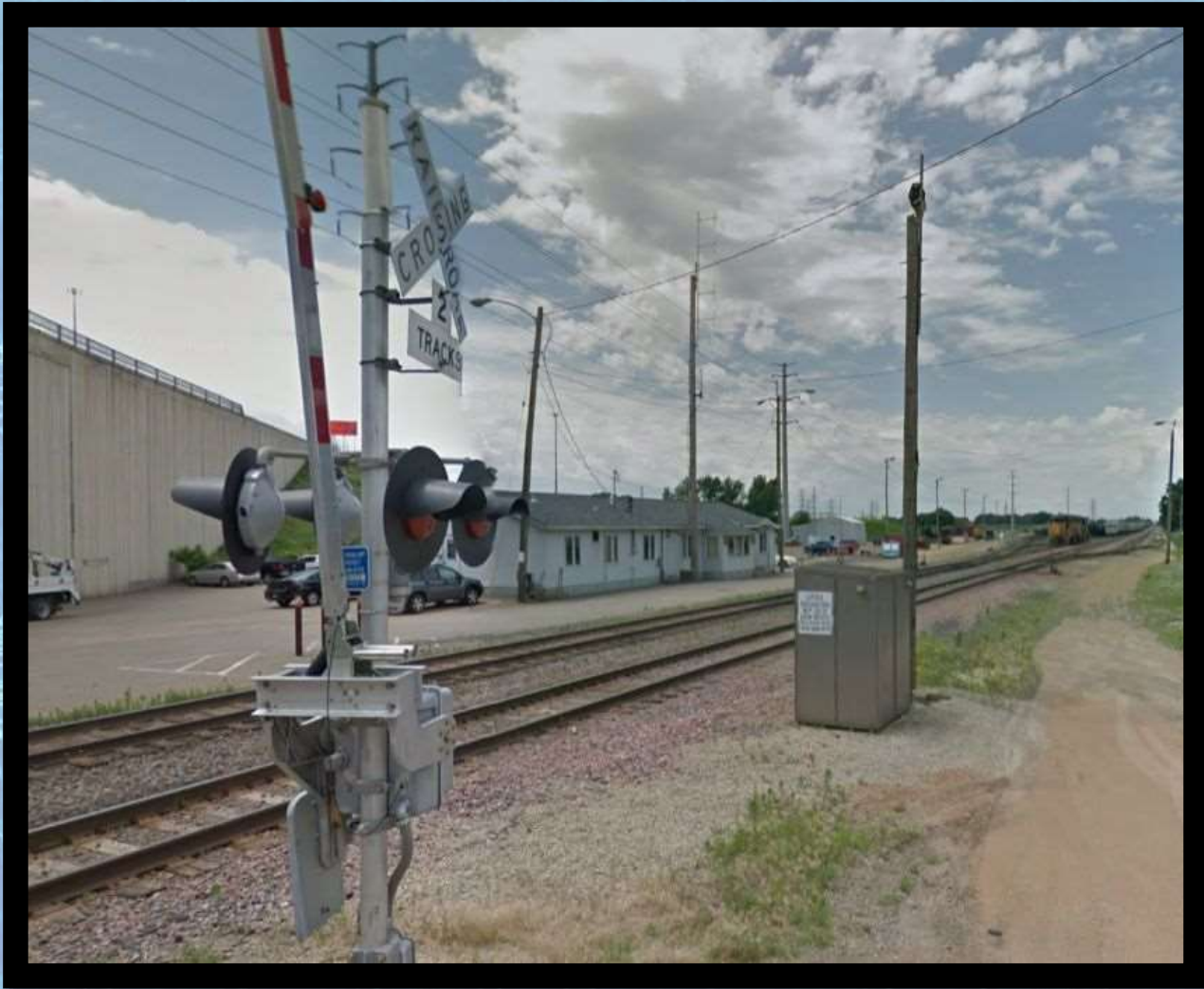


President Taft speaks at Shakopee station, October 1911.

Shakopee, Scott County
Omaha and Milwaukee Road shared depot
Built: 1909

ST. P. & N. P. Ry.
PASSENGER STATION
— FIRST CLASS —

*Elevation **



**Shakopee, Scott County
Union Pacific Depot
Built: 1970-1980**

ST. P & N. P. Ry.
PASSENGER STATION
- FIRST CLASS -

*Foundation **

Some are serving as
Museums



Bemidji GN Passenger Depot



Starbuck NP Depot

ST. P & N. P. Ry.
PASSENGER STATION
— FIRST CLASS —

Some are serving as
Residences



GN Saint Anthony Park Depot



Appleton MLW Depot



ST. P & N. P. Ry.
PASSENGER STATION
— FIRST CLASS —

Some are serving as
Businesses



Minneapolis MLW Depot



McGregor NP Depot

Some are Waiting
to Serve



Northfield CM&SP Depot



Spring Grove MLW Depot



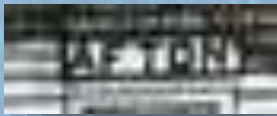
ST. P. & N. P. Ry.
PASSENGER STATION
— FIRST CLASS —

* Front Elevation *



Fundraising Progress





CHICAGO
MILWAUKEE
AND ST. PAUL



ST. P. & N. P. Ry.
PASSENGER STATION
— FIRST CLASS —

* Front Elevation *



ST. P & N. P. Ry.
PASSENGER STATION
— FIRST CLASS —

* Front Elevation *



ST. P & M
PASSENGER STATION
— FIRST CLASS —

* Front Elevation *

CHANHASSEN

CHICAGO
MILWAUKEE
AND ST. PAUL



ST. P. & N. P. Ry.
PASSENGER STATION
— FIRST CLASS —

* Front Elevation *



ST. P & N. P. Ry.
PASSENGER STATION
— FIRST CLASS —

* Front Elevation *

MINNEAPOLIS & ST. LOUIS
RAILWAY

FAIRFAX



ST. P. & N. P. Ry.
PASSENGER STATION
— FIRST CLASS —

* Front Elevation *



ST. P & N. P. Ry.
PASSENGER STATION
— FIRST CLASS —

* Front Elevation *

LE CENTER

CHICAGO
MILWAUKEE
AND ST. PAUL



ST. P. & N. P. Ry.
PASSENGER STATION
— FIRST CLASS —

* Front Elevation *

ST. LOUIS PARK

CHICAGO
MILWAUKEE
AND ST. PAUL



ST. P. & N. P. Ry.
PASSENGER STATION
— FIRST CLASS —

* Front Elevation *

WADENA



— FIRST CLASS —



ST. P. & N. P. Ry.
PASSENGER STATION
— FIRST CLASS —

* Front Elevation *

Dozen Depot Trivia Questions

KEY

7 This train depot used in 2004 movie *Sweet Land*

4 Last message from depot- "I think I've stayed too long".

3 Featured in Robert Ripley's "Believe it or Not" column.

1 Depot claims the distinction of being among the few American rail stations served exclusively by a foreign railroad.

10 Sears, Roebuck and Co. was founded in this depot.

12 Home of the "World's Largest Lefse".

6 Depot widely known for the architect that was responsible for its design.

2 Depot dates back to 1866.

9 Faithfully restored to its original splendor and today serves as a meeting facility for OTC Division of SPX Corporation.

5 Many scholars traveled to this depot to determine the authenticity of a 200 pound slab of stone.

11 This depot took seven years to complete.

8 Depot and famous horse "Dan Patch" were both owned by Marion "Will" Savage.

Shadows of Time...

Minnesota's Surviving Railroad Depots



Bill Schrankler
with Frederick L. Johnson

Foreword by Governor Wendell R. Anderson